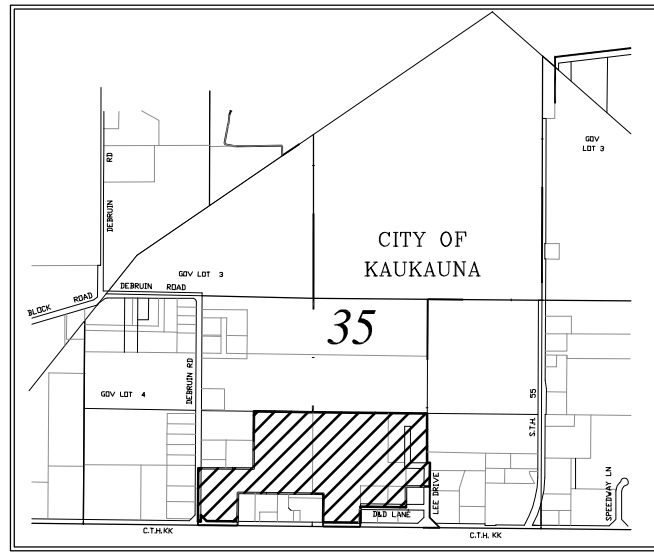
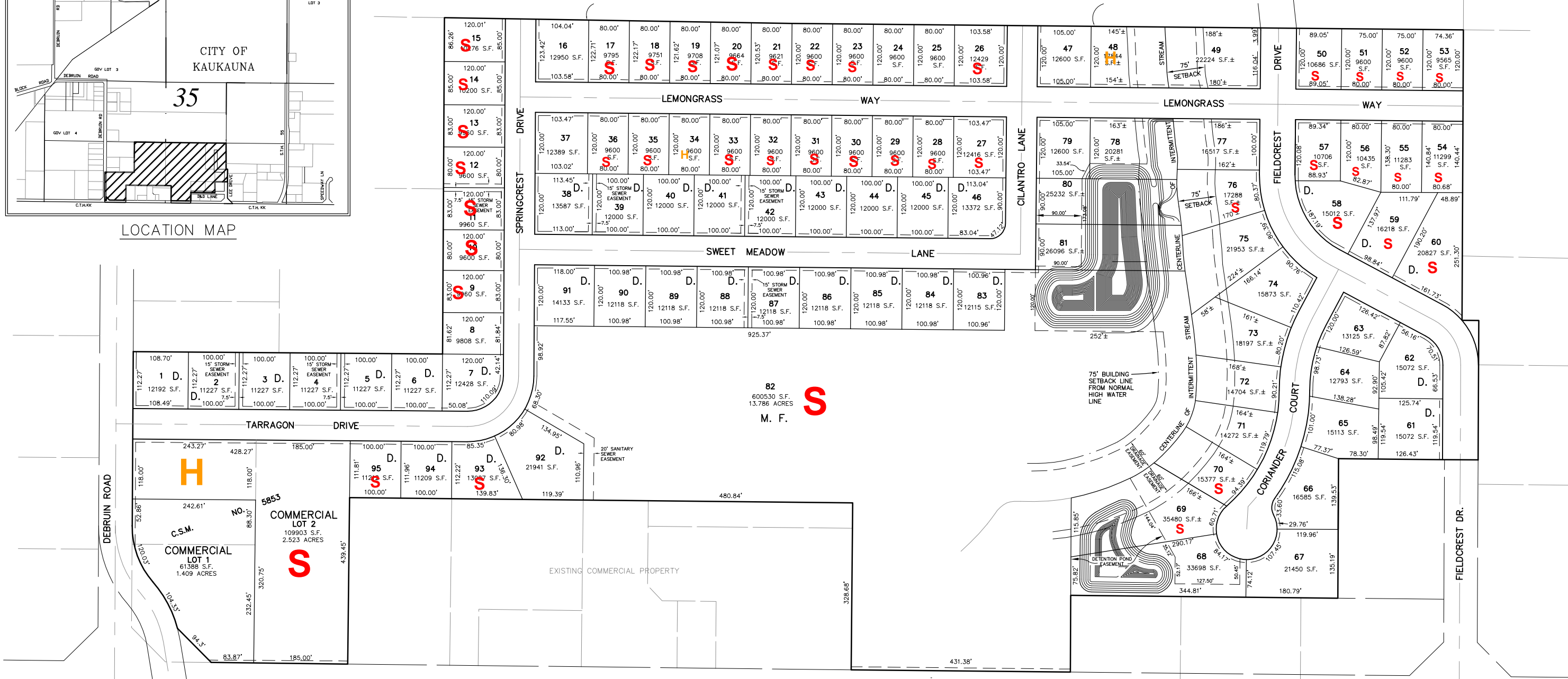


HAEN MEADOWS

A = Available
S = Sold
H = Hold



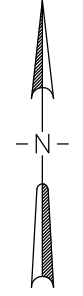
LOCATION MAP



SCALE - FEET

LEGEND

- 6' UTILITY EASEMENT
- D. - ZONED TWO- FAMILY(DUPLEX)
- M. F. - ZONED MULTI- FAMILY
- C. - ZONED COMMERCIAL



OWNER & DEVELOPER
 - WINNEBAGO INVESTMENTS, LLC
 - C/O ALAN P. AMENT
 - AMENT REAL ESTATE
 - 217 E. PACIFIC STREET
 - APPLETON, WISCONSIN 54912
 - PHONE #(920)-831-6000

McMAHON
 ENGINEERS ARCHITECTS

1445 McMAHON DRIVE NEENAH, WI 54956
 Mailing: P.O.BOX 1025 NEENAH, WI 54957-1025
 Tel: (920) 751-4200 Fax: (920) 751-4284
 www.mcmgrp.com

HAEN MEADOWS



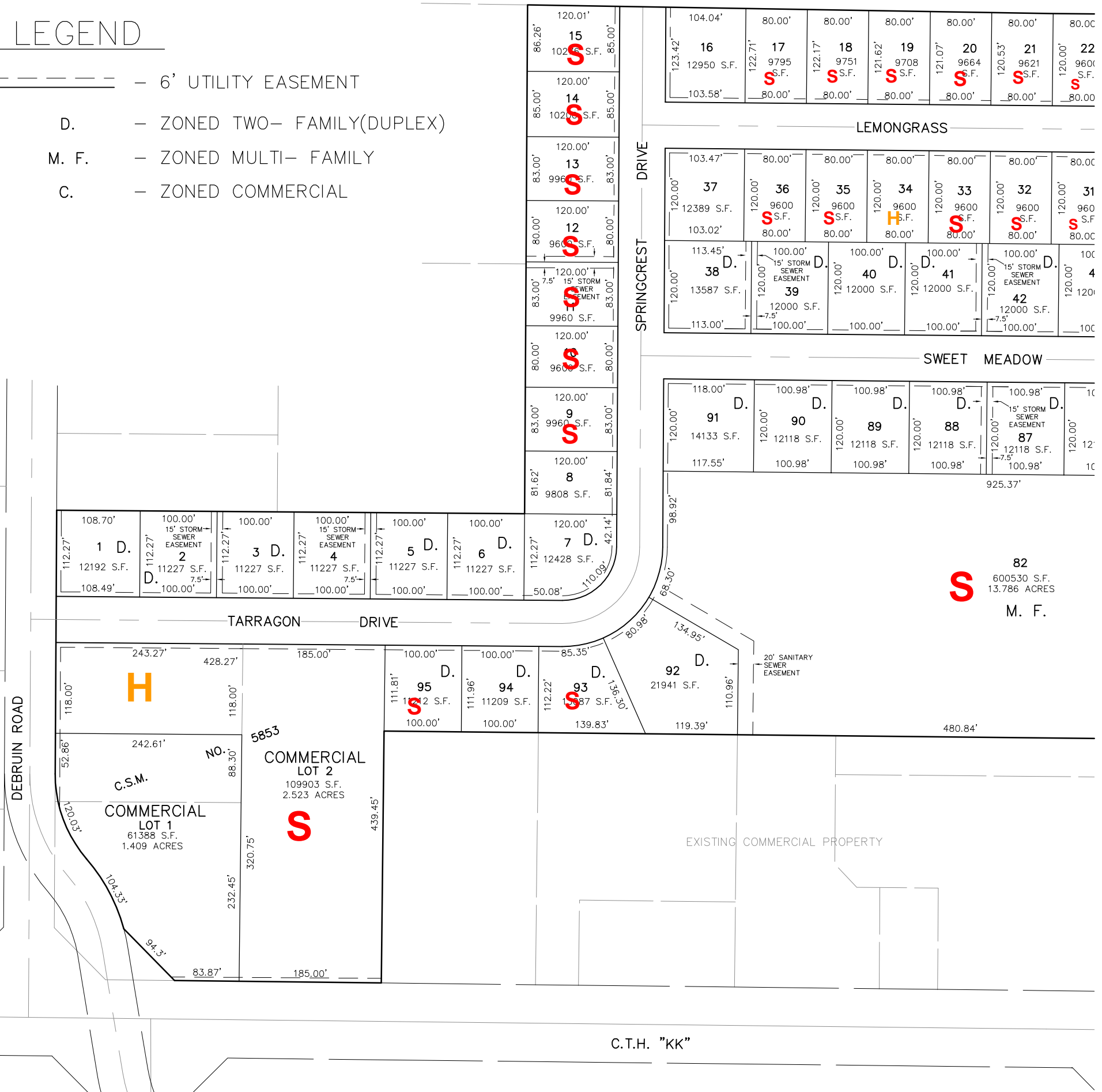
82
600530 S.F.
13.786 ACRES
M. F.

OWNER & DEVELOPER
- WINNEBAGO INVESTMENTS, LLC

HAEN MEADOWS

LEGEND

- - 6' UTILITY EASEMENT
- D. - ZONED TWO- FAMILY(DUPLEX)
- M. F. - ZONED MULTI- FAMILY
- C. - ZONED COMMERCIAL



200 100 0 200



SCALE - FEET

